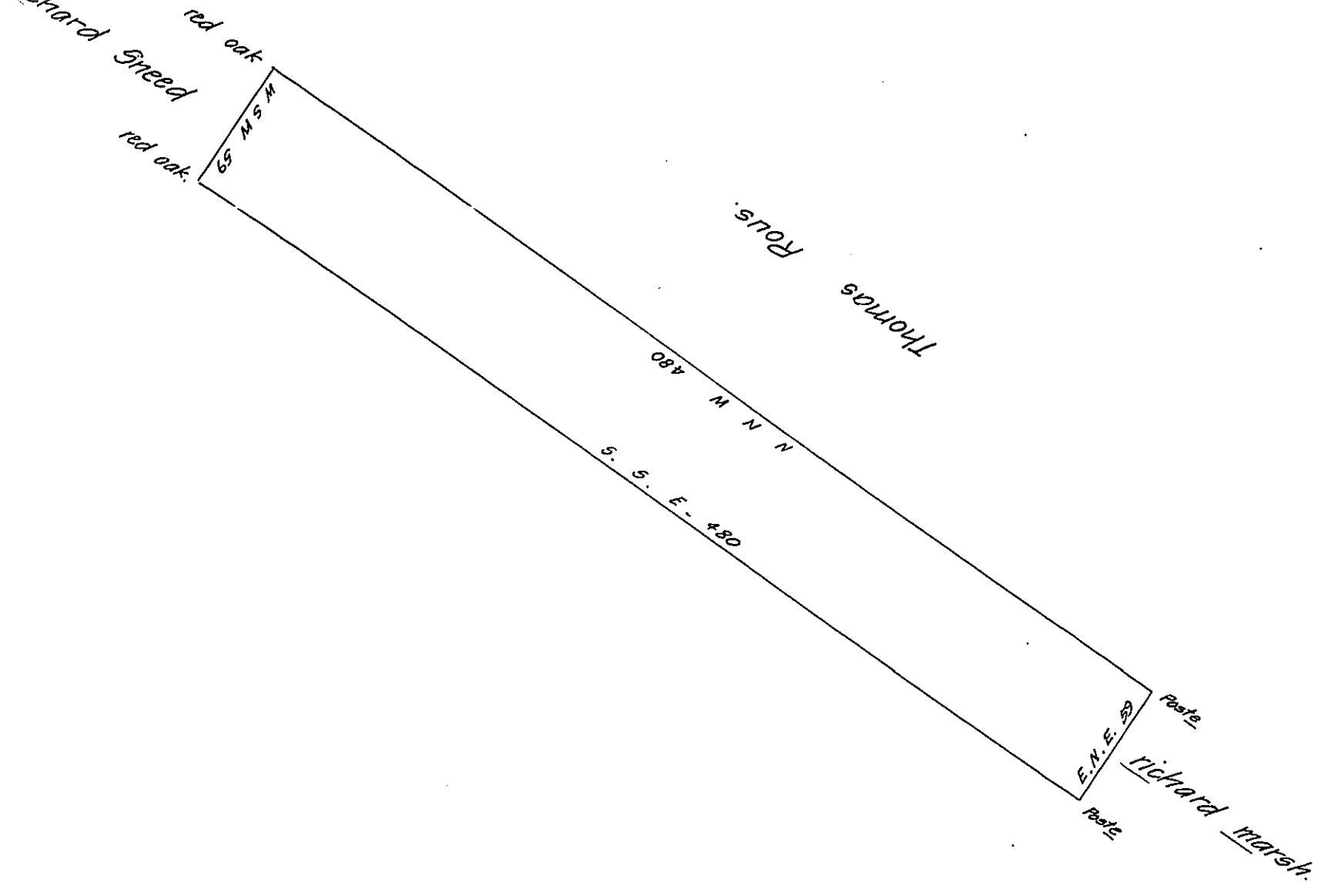


FORM No. 1.



September the 4: 1685

Surveyed for Thomas Coebourne 175 acres of land lying between
Chestor Creek and ridly Creek bounded as by this drafft doth appeare

By
Charles Ashcom.

idge
150 9

A.

id 3 times
it not long
st in T. Bruffy
ing pd for it
2d time he
T.B. parted
ares was set
& 1/2 rest paid

no 83
5 mo 84

IN TESTIMONY that the above is a copy of the original remaining on file in
the Department of Internal Affairs of Pennsylvania, made
conformably to an Act of Assembly approved the 16th day of
February, 1833, I have hereunto set my Hand and caused
the Seal of said Department to be affixed at Harrisburg,
this eighteenth day of March 1909

Henry Howell
Secretary of Internal Affairs.